

At Kingston Heath Primary School a quality learning environment gives students, staff and the community confidence to strive for excellence as active and positive members of a global village.



Website: www.khps.vic.edu.au

Email: kingston.heath.ps@edumail.vic.gov.au

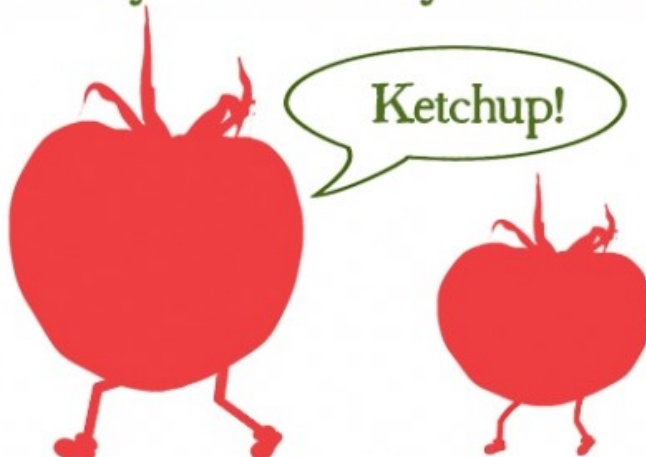
Emergency Management: 9589 6266

Cheltenham Police: 9583 9767

IMPORTANT DATES

November:	
Friday 1st	Curriculum Day—no students
Tuesday 5th	Melbourne Cup Day-Public Holiday
Friday 8 th	Foundation 2020 transition
Saturday 9 th	Working Bee – 9.00am
Monday 11 th	Munchy Monday Mini Exhibition – Year 6 @ 5.30pm
Tuesday 12 th	Family Engagement evening
Wednesday 13 th	School Council sub committee
Friday 15 th	Foundation 2020 transition

What did the daddy tomato
say to the baby tomato?



A little joke from
Kaye in the
Kitchen

MESSAGE FROM THE PRINCIPAL TEAM

Dear Families,

Today is our fourth and final Curriculum Day of 2019. What do teachers and all staff do on these days? This is a question I field from some of our students and families. Our staff engage in a broad range of activity focused on further strengthening the learning and wellbeing of our students. The focus for today's Curriculum Day is on investigating our school learning and school climate data, and using this to begin our forward planning into areas where we can improve our teaching so that all of our students learn and grow.

We would like to thank all of the parents who attended one of the two *Partnership Forum* sessions on Tuesday. We appreciated the rich dialogue around areas of our school that are working well and can be improved. A focus for our discussion was on how our policies, practices and actions serve to decrease or increase trust between the school and our community. Trust is the foundation of all successful partnerships; and as the newly appointed Principal team here at Kingston Heath Primary School, we are committed to actively building trust and strengthening our school-community partnership to provide the best possible engagement, achievement and wellbeing outcomes for every student. At both of forum sessions, communication was raised as something that has improved in recent years and still needs improvement. We have also since received some emails about our strengths and about our communication, and we are grateful that people took the time to write to us. If you have a view around the communication between KHPS and our families, please take a few moments to contribute to this discussion – just click here: [How is our communication at KHPS?](#) . Having 'just right' communication is a challenge in every organisation, and we appreciate your input into this important area of partnership.

We are hoping to meet more parents and carers at the upcoming **Engagement Evening, Tuesday 12 November from 6.30 p.m.** This event will be quite different in focus and purpose to the Partnership Forum. At the Engagement Evening, we will be asking for parent and carer to reflect upon 'what works well' at Kingston Heath Primary School and what might be 'even better if', in context of the Department's Education State school improvement strategy.

In the last newsletter, I outlined two of the key areas of this strategy, ***Excellence in Teaching and Learning*** and ***Community Engagement in Learning***. The third area of focus for the upcoming Engagement Evening is ***Positive Climate for Learning***. School climate impacts health and wellbeing outcomes as well as students' motivation to learn and achieve. Questions to reflect upon in relation to this improvement priority area include;

In what ways do we provide our students the opportunity to collaborate and make decisions with the adults around them around what and how they learn, and how they are assessed?

What strategies and practices are we using to create independent and self-regulated learners?

How do we build productive and inclusive school cultures for all adults and students?

How do we adapt our teaching practices to suit the needs of all students based on the feedback from our students?

How is our school vision and values embedded in our everyday practices and interactions with one another?

How do we celebrate and protect diversity and understanding of others?

How do our policies, practices and programs teach and encourage respectful behaviour, connectedness to school, and engagement with learning?

How do we set high expectations of behaviour and ensure our students have the tools to develop positive and self-regulating behaviours?

The Engagement Evening will be interactive and your feedback will help to inform our next school strategic plan. Please contact Lauren or Shelley in the front office to confirm your attendance as we will shape the evening based on the expected number of participants.

A few safety reminders

At Kingston Heath Primary School, we have a commitment to Child Safety, which means that we make decisions and take actions designed to keep everyone at school safe. With this in mind, I am obligated to remind everyone:

Students are expected to wear a hat when engaged in outdoor play or learning opportunities

All visitors, including parents and carers and volunteers, report to the front office and use our sign-in procedures

Please be mindful at pick-up and drop-off time to follow our road rules; for example, using the crosswalk to cross the street, not double parking, not making a U-turn in front of the school

Walk our bicycles and scooters when inside the school gates

Refrain from taking photographs or videos at school events e.g. Assembly of any children except their own

Alcohol is prohibited on school grounds.

Please do not enter our school playground with a dog, especially at peak times when there are many children around.

Have a lovely and safe weekend! Our next newsletter will be published in Week 6.

Your Principal Team,

Sherri Lake and Karen Roberts

Welcome to the PYP Corner! In this section you will be updated on any PYP related topics, student action, answers to PYP questions, etc.



The PYP Exhibition

2019

In the final year of the PYP, students, carry out an extended, in-depth, collaborative project known as the PYP exhibition.

This involves students working collaboratively to conduct an in-depth inquiry into real life issues or problems. Students collectively synthesise all of the essential elements of the PYP in ways that can be shared with the whole school community.

It also provides teachers with a powerful and authentic process for assessing student understanding.

The exhibition represents a unique and significant opportunity for students to exhibit the attributes of the IB learner profile developed throughout their engagement with the PYP. It also provides the school and students with a wonderful opportunity to celebrate the transition of learners to the next phase of their education.

This year the theme for the exhibition was 'Sharing The planet'. The students have engaged with the UN sustainable development goals and created a presentation of their learning. The students were required to research and synthesise information, present a written piece, maths piece, digital piece, create an interactive component to teach the younger levels at school and choose another subject to demonstrate their understanding.

We would like to invite you to the community viewing session on Tuesday 12th November 9:00—10:00am. The students have worked thoroughly had on their project and it's a true showcase of their knowledge.

Charlotte Birbeck (PYP Co-Ordinator and 5/6 Teacher)



KINGSTON HEATH PRIMARY SCHOOL

YEAR 6 EXHIBITION

WHO: KHPS Community

WHEN: 12th November, 9:00 - 10:00am

WHERE: Hall



‘Communities can make global connections’

Under the Transdisciplinary theme ‘Sharing The Planet’ the year 6 students of Kingston Heath Primary School have been inquiring into a range of different communities and have creatively presented their findings through various subject areas and forms.

They have also committed to taking some form of action as a result of their inquiry.

We invite you to come and view their hours of hard work and dedication.

Year 5 and 6 Learning Update

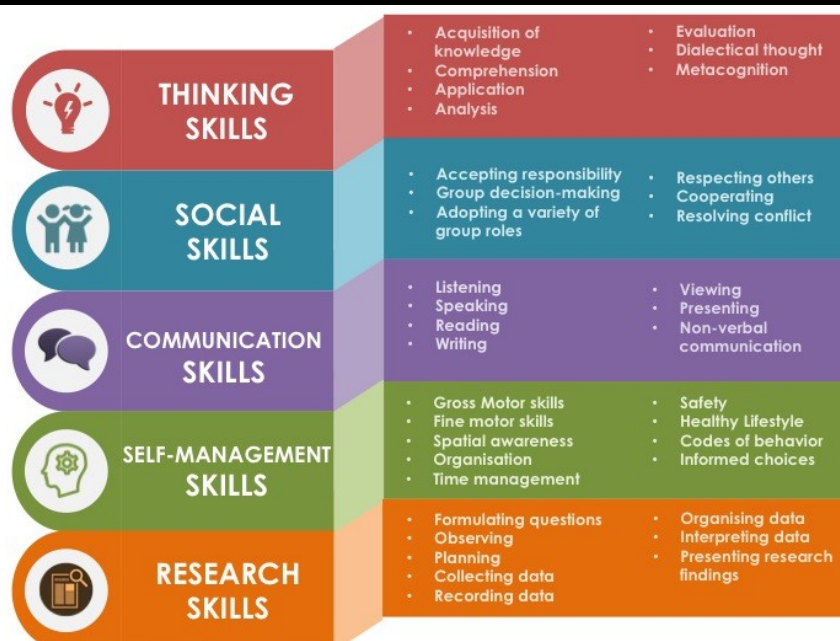


Date	What's happening...	Central Idea	Learner Profile attribute/ ATL focus	English	Maths	Reminders
28/10	This week...	Communities can make global connections	<u>LP:</u> Balanced <u>ATL:</u> Social Skills	Script writing & Role Play	Number place value	<u>(SEE 5/6 HOUSEKEEPING ALSO)</u> Melbourne Cup; Tuesday 5th November Year 5 Mini-exhibition viewing; Thursday 7th November, 2:30—4:00pm
04/11	Next week...	Communities can make global connections	<u>LP:</u> Communicators <u>ATL:</u> Social Skills	Recount	Number place value	Year 6 Exhibition; Monday 11th—Wednesday 13th November

Table Talk Question

“What Approaches to Learning skills do you think you have developed during your mini-exhibition/exhibition inquiry? What skills do you think you need to continue to work on?”

Use this image as a guide to help prompt your questioning.



DreamCity Excursion

On Thursday 31st October, Students went to DreamCity as a pilot group for a new and upcoming organisation. Students had the opportunity to simulate potential careers using high-tech equipment. It was a great 'Tuning In' task to our new unit and about experiences and preserving memories. The day was engaging and covered many aspects of the curriculum. The students will be writing their feedback to Michelle and the Dream Leaders about things they loved, didn't love and what else they'd like to see included. The directors are very much about student voice and agency and want to know our students honest and critical feedback. Overall, it was an amazing opportunity and we have been asked that if there is time in the term, they'd like us back to test out their feedback.



OPEN-MINDED



INQUIRERS



BALANCED



CARING



THINKERS



COMMUNICATORS



REFLECTIVE



RISK-TAKERS



PRINCIPLED



KNOWLEDGEABLE

Year 3/4 Learning Update



Date	What's Happening?	Central Idea	Learner Profile attribute/ ATL focus	English and Maths focus
This week..	Swimming Curriculum Day	Beliefs and values motivate human behaviour (Who We Are)	LP Attribute Inquirer ATL Focus Thinking Skills	English: Reading strategy—synthesising Maths: Measurement
Next week...	Cup Day Working Bee (10/Nov)	Beliefs and values motivate human behaviour (Who We Are)	LP Attribute Open-Minded ATL Focus Social Skills	English: Word study— Colour words Maths: Measurement

Each fortnight we will include a question that you and your family can discuss.

Table Talk Question: What do you believe and value in your household? What is important to your family?

Don't forget to practice your times tables!

This week in 3/4 we are starting our new unit of inquiry! We will be exploring beliefs and values that people have and how that motivates our behaviour.

WHO WE ARE

Central Idea

Beliefs and values motivate human behaviour

Lines of Inquiry

- An inquiry into the belief systems that exist in our community
- An inquiry into belief systems and their many similarities and differences
- An inquiry into how beliefs and values contribute to the formation and actions of communities

Key Concepts

Form

Perspective

Learner Profile Attributes

Inquirer

Open-minded

Approaches to Learning

Social skills

Swimming Reflection

Swimming was really fun. I liked the fun day with the wave pool. I got better at dolphin swim!

- Charlie

At swimming I got a lot better at my butterfly. I enjoyed how the teachers made lessons fun.

-Charlotte K

At swimming I got a lot better at backstroke. The fun day was the best because I liked the inflatable course.

- Zac

Aboriginal Newspapers

As part of our summative assessment for Where we are in Place and Time, students in year 3/4 created newspapers based on historical events. Here are some reflections from this task:

I was very proud of my newspaper about Sorry Day. I really enjoyed using Canva to publish and I think it looks really good.

-Peter

At first I didn't know what to do but as I researched I started to learn about how they changed the laws about Aboriginal people. I was most proud of my main article.

- Asala



Year 1/2 Learning Update



Date	What's happening...	Central Idea	Learner Profile attribute/ ATL focus	English	Maths	Reminders
28/10	We will continue our UOI, How We Organise Ourselves.	Individuals can develop healthy money habits.	LP: Thinker and Balanced. ATL: Self-management skills and Research skills.	Students have been learning how to write persuasively, specifically focusing on advertisements and expositions.	Students have been learning about the days of the week and time.	Friday 1 st Curriculum Day
4/11	We will continue our UOI, How We Organise Ourselves.	Individuals can develop healthy money habits.	LP: Thinker and Balanced. ATL: Self-management skills and Research skills.	Students will continue focusing on how an audience can be persuaded and test out their persuasive writing abilities.	Students will continue learning about time, days of the week and the months of the year.	Tuesday 5 th Nov Cup Day

Table Talk Time

Some things you could discuss...

How do our self-management skills effect our money habits?

How would services and goods differ in other countries?

Swimming

These past two weeks have been exciting at WAVES! Students have had immense fun learning to swim, refining their swimming skills and learning the importance of water safety. We have loved the enthusiasm of all students and their willingness to be **risk-takers** in the pool. Thank-you to all the parent helpers who came to watch and help out too!

Speaking and Listening Activities

We have been putting our mouths and ears to the test this week! Students have participated in a range of speaking and listening activities to understand the art of giving specific instructions, understanding body language and listening carefully to each other's verbal instructions. This was difficult for us at the beginning but we have improved and become great **communicators**. Our favourite would have to be building the same Lego creation as our partner, without seeing their design!



Maths Fun

We have been learning all about TIME this week. We have been having an awesome time testing our counting skills and seeing if we know when a minute has past, drawing clocks and the time and completing calendar activities. Our favourite activity this week though would have to be doing the Macarena to the months of the year!



Foundation Learning update



Date	What's happening...	Central Idea	Learner Profile attribute/ ATL focus	English	Maths	Reminders
28/10/19	This week...	Cycles in nature determine outcomes	Balanced	Reading with fluency	Addition and subtraction	Curriculum Day Friday 1 st November
4/10/19	Next week...	Cycles in nature determine outcomes	Knowledgeable	Writing recounts	Number and place value	

Swimming



Learning about Diwali

On Thursday afternoon Yash's Mum Bijal presented ideas about Diwali with the support of Eknor's Mum, Aman. Bijal shared some special Indian treats with everyone in Foundation. As Diwali celebrates the triumph of good over evil with lights and colour, Yash, Eknor and Ayra showed us some fireworks sparklers.

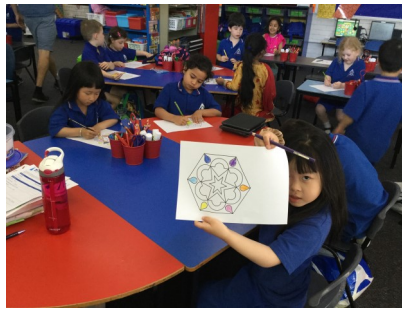


Table Talk Time: This section is for families to use as a prompt to have discussion about of our unit of inquiry, over the dinner table.

Discuss: 'Why has it been so hot this week?'

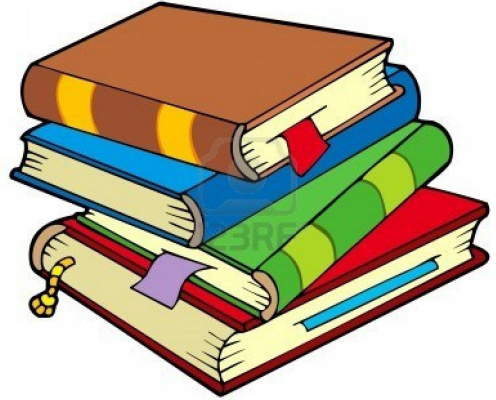
FROM THE LIBRARY

Library End of Year Update

With the end of year fast approaching the final library sessions for borrowing will be the week of 18 – 22 November.

The final library sessions for returning ONLY will be the week of 25-29 November.

If all books can be returned to the library by Friday 29th November for stocktake to begin in December.



Many thanks,
Sam May
Library

CAFÉ CULTURE LUNCHEON

Wednesday 4th December, 2019

@ 1.00pm in the Hall

4 Course Lunch

Cost :\$20.00

RSVP/payments to Shelley/Lauren – office



JUNIOR ATHLETICS

"Junior Athletics (Foundation-grade 2) will be taking part in their events on Friday 22nd November on the school oval. It will start at around 9:15am with the first race scheduled for 9:25am and finish before recess.

House colours need to be worn, preferably with no logos or sports jerseys.

Family and friends are welcome! Hope to see you there to cheer on the houses!"

Thanks

Chris O'Connor

PE Teacher



FOODIE MONDAY/FRIDAY

Foodie Monday/Friday (the old Earn and Learn) is well and truly underway.

Sausage rolls, pies and pasties are available for the children to purchase.

****Please note the price increase**.**

Sausage rolls now cost **\$3.00**

and pies/pasties now cost **\$4.00**

Yoghurt ice-creams will again be on sale for \$2.00

Please note if there is a Munchy Monday FUNdraising lunch on, there will be **NO** Foodie Monday running that day.



KHPS NOVEMBER BIRTHDAYS

6th: Sadie V
11th: Tyson W
12th: Daniel B
14th: Lizzie N
16th: Alex P
16th: Eva V



2019 Calendar dates of events

November:	
Friday 1st	Curriculum Day – no students
Tuesday 5th	Melbourne Cup Day public holiday
Friday 8 th	Foundation 2020 transition
Saturday 9 th	Working Bee – 9.00am
Monday 11 th	Munchy Monday PYP Exhibition – Year 6 families only @ 5.30pm
Tuesday 12 th	PYP Exhibition Community viewing—9:00—10:00am Family Engagement evening
Wednesday 13 th	School Council sub committee
Friday 15 th	Foundation 2020 transition
Tuesday 19 th	Walk-a-thon
Wednesday 20 th	Foundation MFB Fire Incursion School Council meeting
Friday 22 nd	Junior Athletics Carnival P – 2 at KHPS
Friday 29 th	Year 5/6 Excursion to Cheltenham S.C.
December:	
Saturday 7 th	Working Bee – 9.00am
Tuesday 10 th	Orientation day
Wednesday 11 th	Foundation Graduation
Thursday 12 th	Year 6 Graduation evening
Monday 16 th	Year 5/6 Active Day
Tuesday 17 th	2019 Celebration Concert
Thursday 19 th	Year 6 Celebration day
Friday 20 th	Last day of Term 4, 12.45pm special candle ceremony assembly. 1.30pm dismissal. Free dress, except for Year 6

WORKING BEES ARE RETURNING TO KHPS



We can't wait to restore that sense of pride in our outdoor learning environments.

Are you handy in the garden, able to undertake some pruning, capable of distinguishing between a plant and a weed?

Perhaps you can undertake some sweeping or spread some much needed garden mulch?

You might prefer to clean a drink trough?

Skilled labour would also be appreciated....can you lay a garden sleeper, build a bike shed, remove some pavers or prepare an area for future paving?

We encourage all families to attend and participate. You will meet new people and be part of our wonderful community, whilst maintaining and creating a wonderful school environment.

We will be holding Level Working Bees from 9.00 -11.00am on the following dates:

Level 3/4: Saturday 9th November

Level 5/6: Saturday 7th December

We would love you to diarise the date.

We have many jobs to get through and all of our hard workers will be rewarded with some light refreshments at the end.

Don't worry if you have never been to a Working Bee, we will show you how!

Come and get your hands dirty while doing an act of kindness for our school.

Karen Roberts
Assistant Principal



Parent Green Team

Term 4, 2019

Friday: 25th October 6th December
8th November 20th Dec TBA
22nd November

*** 9am-11am, meet in the central courtyard.**

Morning Tea Provided!



#202030814



Lisa Druce (Class 5/6A) & Emma Netzer (Class 1/2C) 0402 059 223



Life Skills
Creative Time
New Experiences
Construction & Manipulative Play
Outdoor Play Time
Homework & Quiet Time

To book, visit:
www.campaustalia.com.au
or call 1300 105 343

Join the fun. It's **FREE** to Register!

At Camp Australia we have been Making Kids Smile for over 30 years. Each day before or after school, we provide safe, meaningful and affordable care that help families balance life and work responsibilities.

Our Outside School Hours Care program is tailored to the individual needs and interests of children who attend, so we can further their experiences and interests, and ensure they feel at home with us.

Registration is FREE!

To attend our care, families must register their child. Why? Registering your child means we have all the information we need to safely care for them.

So, we recommend all families to register an account with us. That way, if you ever need us, you just have to book a session, as we already have all the documentation we need from you.

How to Register an Account:

Head to pp.campaustalia.com.au/account/login. We will need the following information:

- Your details and emergency contacts.
- Details about your child, and if any allergies or medication conditions.
- Your CRN (Customer Reference Number) from the Family Assistance Office. *
- Child Immunisation Certificates
- Payment method and any other details.

Program Details

For more information visit us in service and chat with our qualified Educators. Alternatively, you may visit our website www.campaustalia.com.au or contact our friendly Customer Care Team on 1300 105 343 who are available 24 hours a day, 7 days a week - except National Public Holidays.

We look forward to seeing you and your family soon!

From the Team at Camp Australia

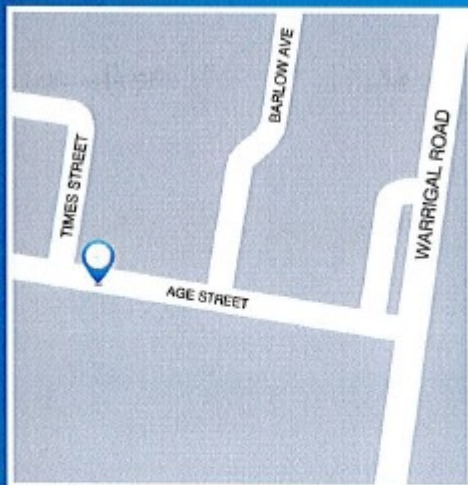
* If eligible, to help you with the cost of child care, you may be entitled to receive the Australian Government Child Care Subsidy.

Safety • Meaningful • Innovative • Leadership • Education
we make kids smile



OPENING SOON!

**WEDNESDAY
NOVEMBER 6TH, 2019**



NEW LOCATION

1 AGE STREET, CHELTENHAM,
VIC 3192 TEL (03) 9768 0332

REGULAR TRADING HOURS**

Mon to Fri : 9:00am - 5:00pm
Saturday : 10:00am - 1:00pm

EXTENDED TRADING HOURS

Mon November 18th, 2019 - Sat March 7th, 2020
Mon to Fri : 9:00am - 5:00pm
Saturday : 9:00am - 2:00pm

PSW.COM.AU *Save Time, Shop Online!*



SHOP
ONLINE



FLEXIBLE
EXCHANGE
OPTIONS



RETAIL
STORE



LAYBY
AVAIL



*** ASK
IN-STORE



PSWSCHOOLS



PSW_APPAREL

